

# Industrial cutting laser

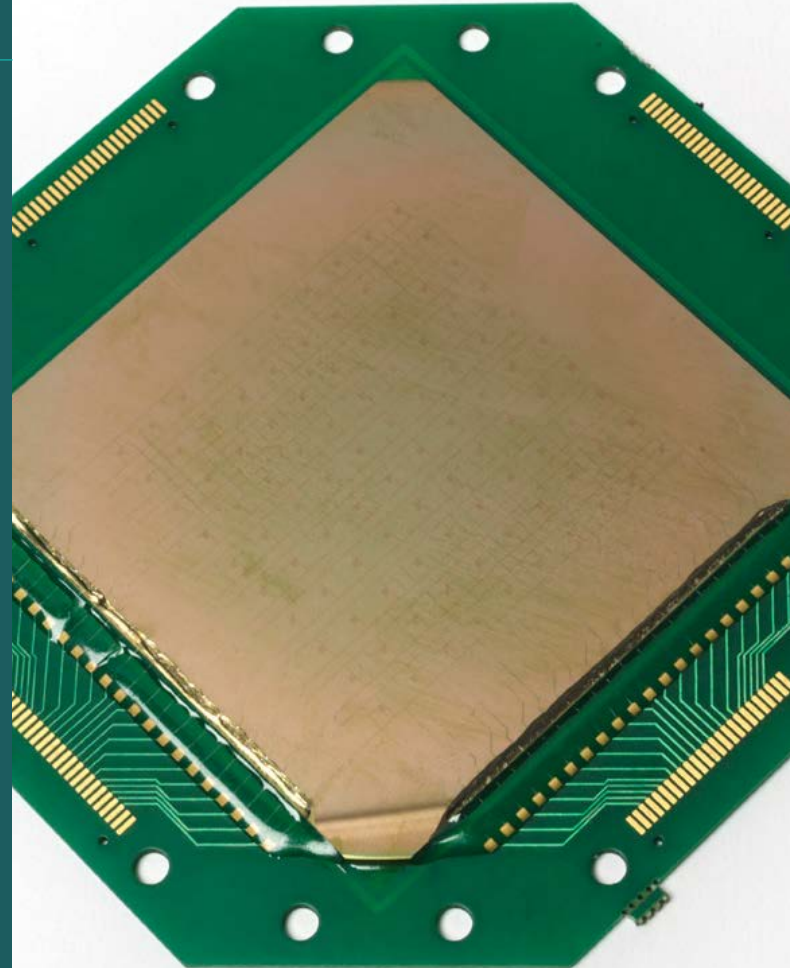


TRUMPF

## Development of an on-line monitoring system for a high power industrial cutting laser

### Expertise and domain knowledge

- Mathematical modelling
- Sensor Physics
- Thermal Dynamics
- Laser
- Optics
- Algorithms



### **Our client asked:**

TRUMPF provides manufacturing solutions in the fields of machine tools, laser technology, electronics and Industry 4.0. It was looking for an on-line monitoring system for a high power (10kW) industrial cutting laser.

### **The project story:**

The challenge that was presented to us was that the lasers need regular trimming in order to maintain their cutting efficiency, but any sensor placed in the beam is instantly destroyed.

By monitoring the temperature on the rear of a silicon mirror, we could infer the optical beam profile of the laser.

We created a sensor array as an array of diodes that could be integrated into the fabric of the silicon mirror using standard lithographic techniques.

Algorithms converted the temperature array data into an accurate representation of the laser beam's optical profile.

Utilising a 2500 pixel MEMS optical beam sensor array, allowed rapid set-up and continuous monitoring of the laser beam's profile in order to ensure consistent operation of that laser.

### **Contact us**

[info@sagentiainnovation.com](mailto:info@sagentiainnovation.com)

+44 1223 875200

[www.sagentiainnovation.com](http://www.sagentiainnovation.com)

### **Results: deliverables and outcomes**

TRMPF still uses this system to continually monitor and auto-trim their cutting lasers.